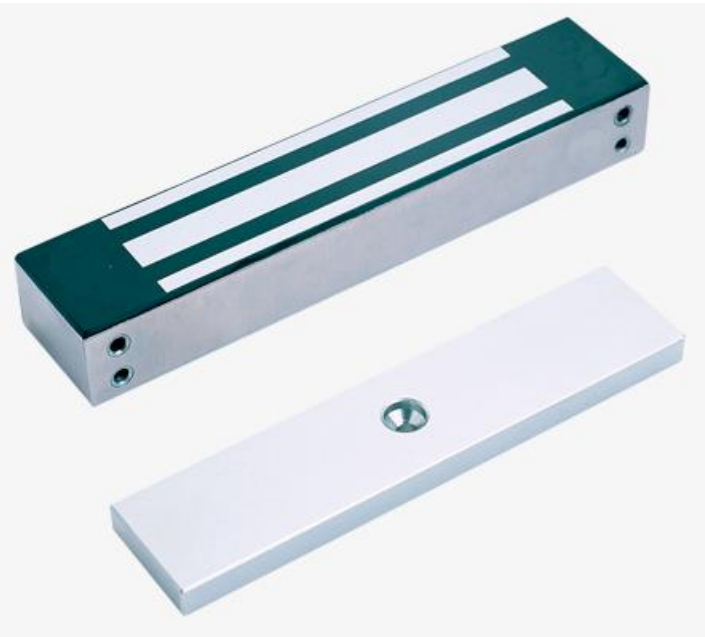


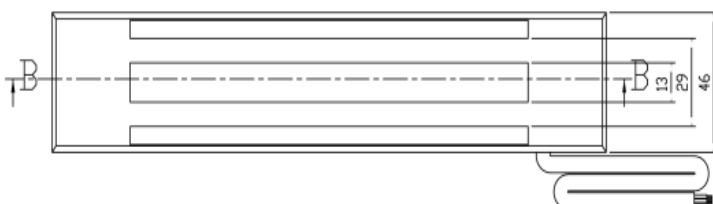
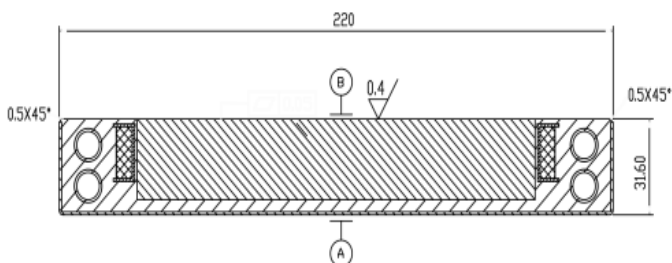
CFD - IGEM 4700RS-3M Weather Proof Magnetic Lock



Also Available in Non-Monitored
4700S: Side Fix and 4700F: Face Fix



DIMENSIONS



Stainless steel magnet

Hi-quality built compact electromagnetic lock finished in strong AISI 304 stainless steel for standard door applications. The unit is supplied completely sealed to allow external applications.

Although could be integrated perfectly with the standard doors, our stainless steel electromagnetic locks are mainly recommended for external applications and hostile environment.

The housing is completely sealed* and so is the wiring and connections potted in resin to make this model IP67 rated in addition to the ISO 9227 and ASTM B 117-90 norms.

Heavy Duty External
Use - IP 67



SPECIFICATIONS

- Mounting: Side mount
- Holding force: ~4100N / ~410 kgf / ~920 lbf
- Voltage: 12/24 VDC
- Current: 400/200 mA
- Locking monitoring: Yes
- Sizes: 220 x 47 x 32mm
- Weight: ~3kg
- Operating temperature: -40°C to +60°C

FEATURES

- 7500N Range
- High-quality stainless steel*
- IP 67 compliant: Housing and wiring completely sealed
- Corrosion proof: Salt spray test. ISO 9227, ASTM B-117 90
- No residual magnetism – No spring push button on armature plate for magnet release
- All components and connections fully sealed
- Built-in MOV surge protection
- 10 years warranty