

TS 2000

GEZE TS 2000 V

Overhead rack and pinion door closer,
size 2/4/5 to EN 1154

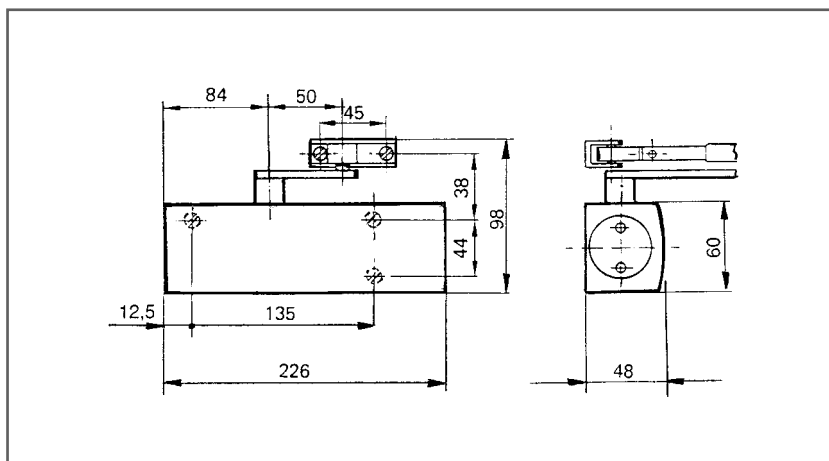
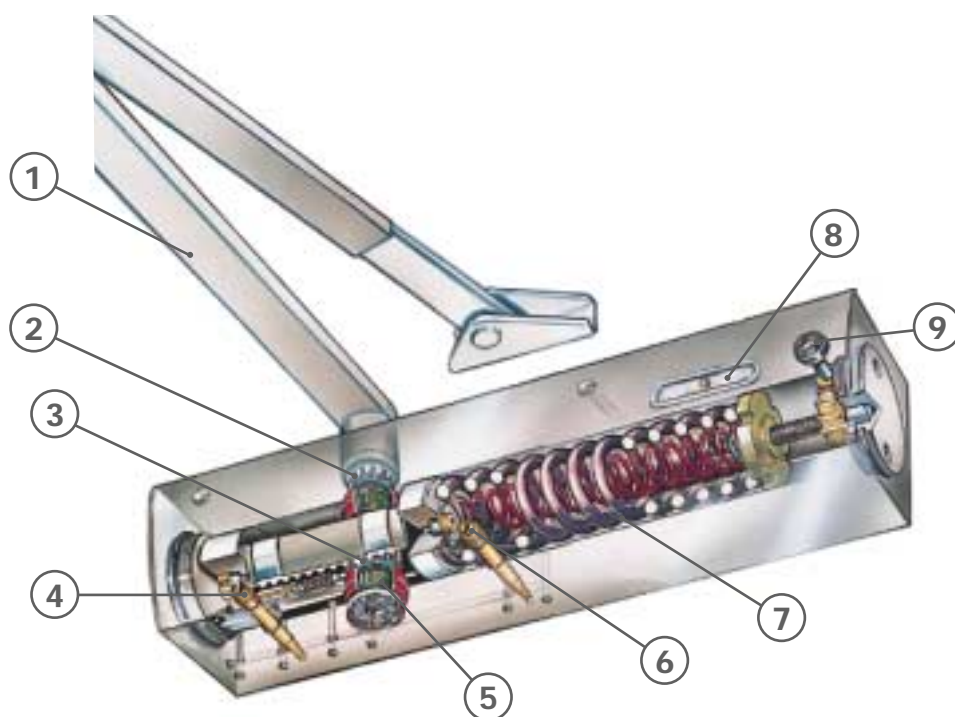
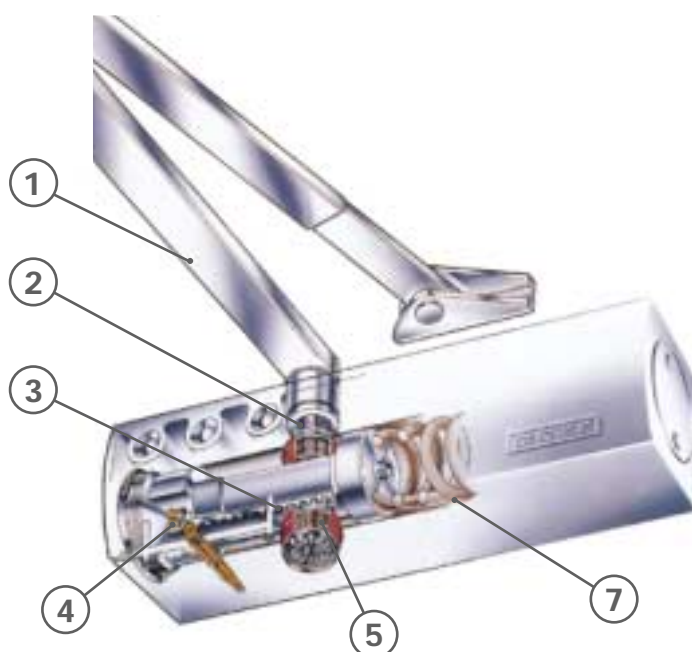


Fig. 3

Technology

GEZE TS 2000 V and GEZE TS 4000 door closers

- | | | |
|--------------------------|----------------------|---------------------------|
| 1 Link arm | 5 Needle bearing | 8 Closing force indicator |
| 2 Toothed spindle | 6 Backcheck adjuster | 9 Closing force adjuster |
| 3 Rack and pinion gear | 7 Spring | |
| 4 Closing speed adjuster | | |



OV

Product features

- ▶ Variable closing force, size 2/4/5 to EN 1154
- ▶ Closer in only construction size
- ▶ Closing speed adjustable at front
- ▶ Latching action adjusted via link arm
- ▶ Attractive link arm
- ▶ Concealed mounting plate
- ▶ Housing and link arm available in following colours: silver, dark bronze, white, RAL colours on request

Applications

- ▶ For single action doors
- ▶ Suitable for right and left closing doors, adjustment not necessary
- ▶ For leaf width up to 1250 mm

Standard version/ package

GEZE TS 2000 V complete with link arm, screw accessories, fitting template (mounting plate not included)

Special design

GEZE TS 2000 V complete with hold open arm (effective to a door opening angle of max. 150°)

TS 2500 V version

A cover cap with the following finishes is available for the closer: silver, dark bronze, white, polished brass, stainless steel, RAL colours on request

Link arm are also available with the following finishes: silver, dark bronze, white, stainless steel effect, RAL colours on request

> 2000 TS

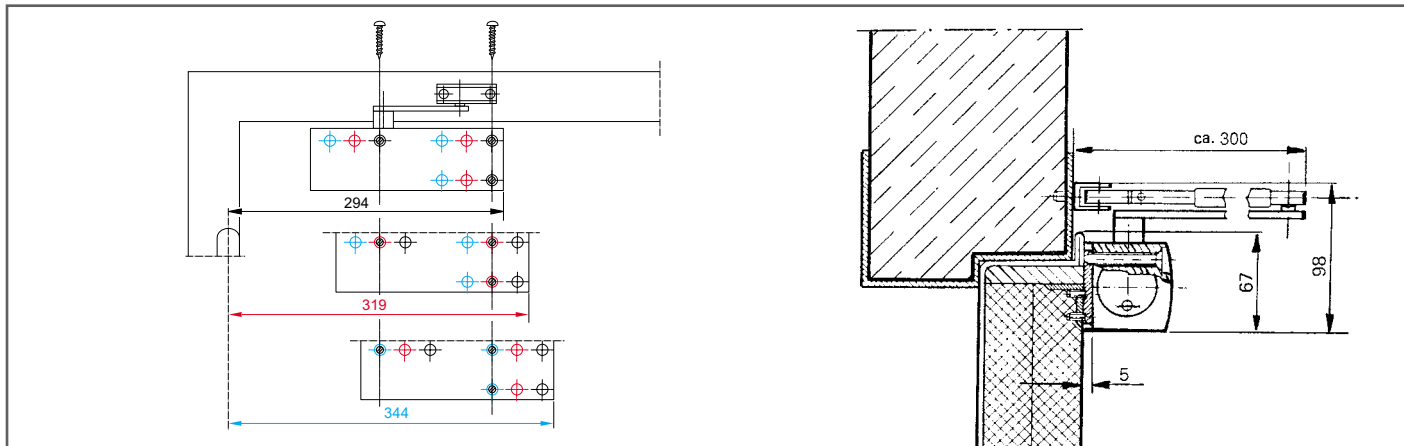


Fig. 4

Standard installation

Example showing the mounting of **GEZE TS 2000 V**.

The closing force is adjusted by changing the mounting position (see Fig. 4)

- ≙ Closer size 2
 - ≙ Closer size 4
 - ≙ Closer size 5
- to EN 1154

Installation with mounting plate

Mounting plate, 5 mm deep (for doors where direct closing is not possible). See Fig. 5

Mounting dimensions for left closing door as per fig. 6

Mounting dimensions for right closing door as per fig. 7

Direct installation^{*)}

Mounting dimensions for left closing door as per fig. 8

Mounting dimensions for right closing door as per fig. 9

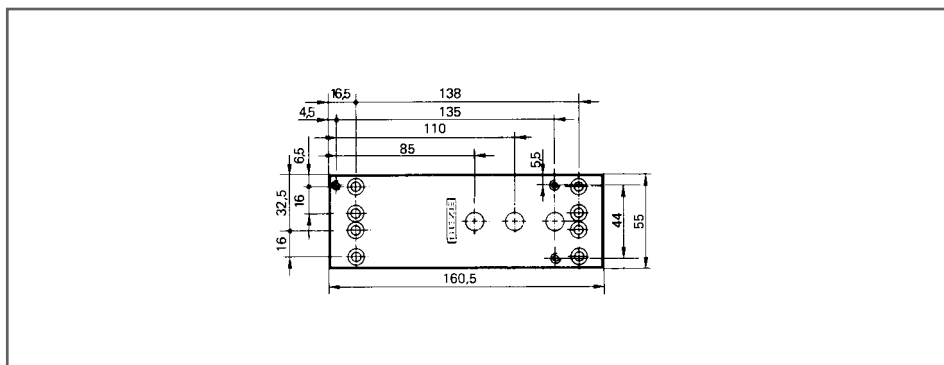


Fig. 5

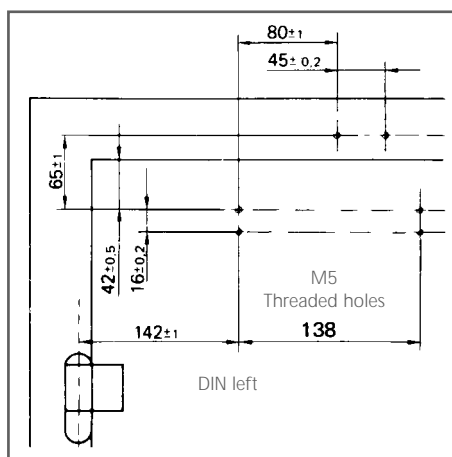


Fig. 6

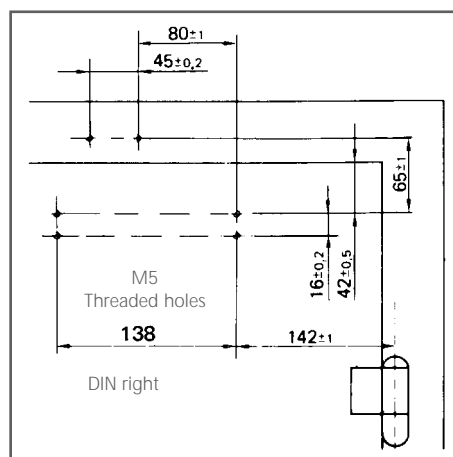


Fig. 7

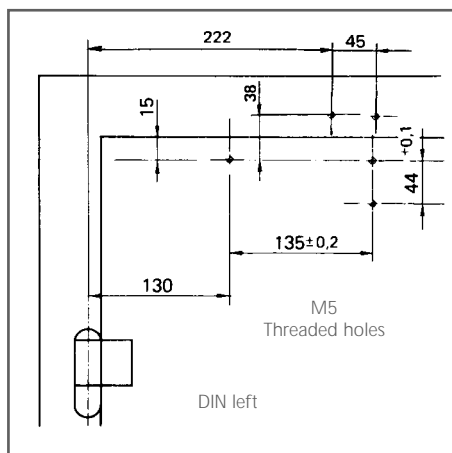


Fig. 8

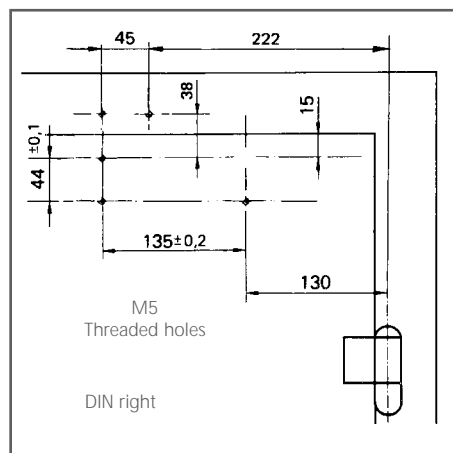


Fig. 9

Overhead and pinion door closer

GEZE TS 2000 V

Ordering text

Description	Finish	ID No.
GEZE TS 2000 V , without link arm	silver	029872
	dark bronze	029873
	white RAL 9010	031237
	white RAL 9016	029874
	RAL colour	029875
Standard link arm	silver	009464
	dark bronze	009465
	white RAL 9010	031231
	white RAL 9016	009466
	stainless steel effect	027131
	RAL colour	009467
Extended link arm	silver	059950
	dark bronze	059951
	white RAL 9016	008960
	RAL colour	010079
Hold-open arm can be enabled / disabled	silver	028777
	dark bronze	028778
	white RAL 9010	031233
	white RAL 9016	028779
	RAL colour	028780

Mounting material

Description	Finish	ID No.
Mounting plates for doors which the closer cannot be directly mounted	–	055756
Clamping plate for plate glass doors	silver	055773
	dark bronze	055774
	white RAL 9016	009499
	RAL colour	009500
Lintel casing angle for transom mounting	silver	055766
	dark bronze	055767
Mounting plate for segmental arch door (max. arch height 130 mm)	silver	059044
	dark bronze	059045
Drilling template	–	053134

Product description

Overhead door closer
GEZE TS 2000 V with
variable closing force,
sizes 2-4 and 5 as per
EN 1154. Adjustable
closing speed and latching
action, alternatively
with mounting plate

Finish:
() silver
() dark bronze
() white
() RAL

Accessories

Description	Length (mm)	Finish	ID No.
Cover caps GEZE TS 2500 V		silver	013487
		dark bronze	014849
		white RAL 9010	031214
		white RAL 9016	014855
		polished brass	072770
		stainless steel	072769
		RAL colour	014856
Serrated spindle extensions	5	galvanised	052332
	10	galvanised	052333
	15	galvanised	052334
	20	galvanised	052335
	5	black chromated	052494
	10	black chromated	052495
	15	black chromated	052496
	20	black chromated	052497

* only suitable for direct installation.

TS 2000 V