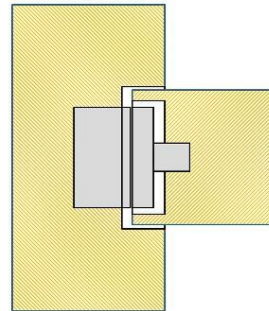
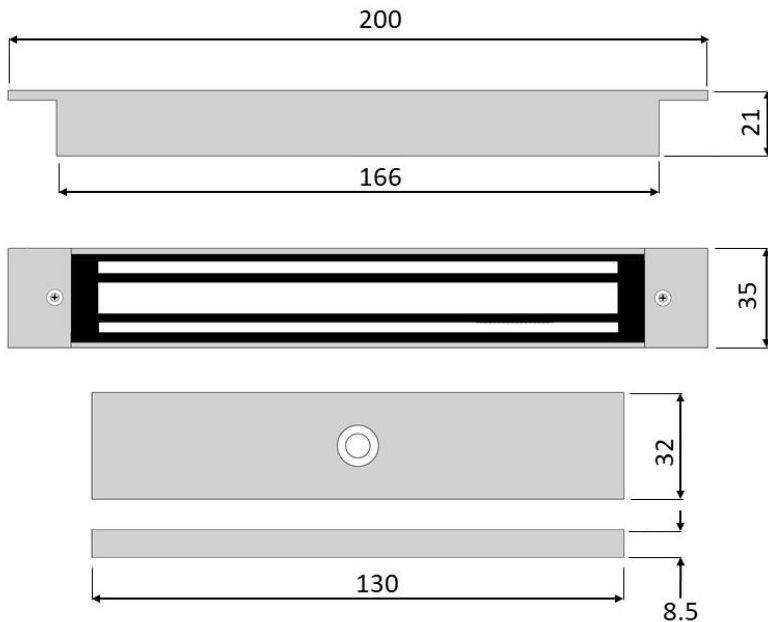
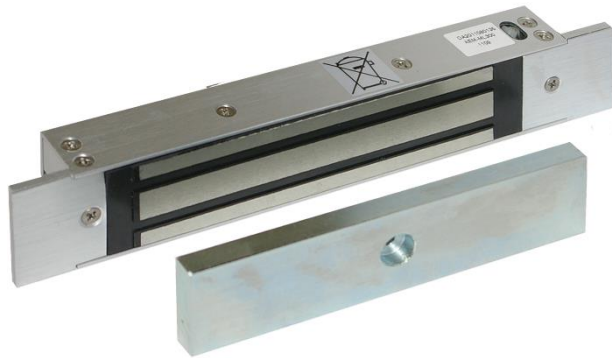
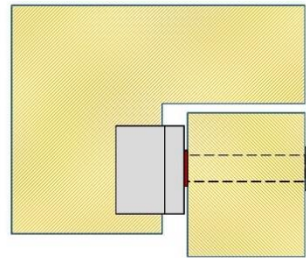


# AEM-ML300 Mortice Micro Unmonitored Electro-magnetic Lock



Sliding door with armature plate in the edge / side of the door



Mortices into head frame or frame stop

***Deedlock Mortice Micro Electro-magnetic Lock is designed for locking small doors on cupboards and lockers which are either sliding or hinged outward opening.***

Suitable for flush fixing into timber or aluminium frames with face to face armature mounting on the door face or edge / side.

## Features & Benefits

- Flush mounted face to face fixing
- Low maintenance with no moving parts
- Holding force 300lbf / 1.3kN / 136kgf
- Dual Voltage 12 or 24V DC – 360mA/180mA current draw
- Dimensions L200 x W35 x D21mm